





Hestercombe Avenue, SW6

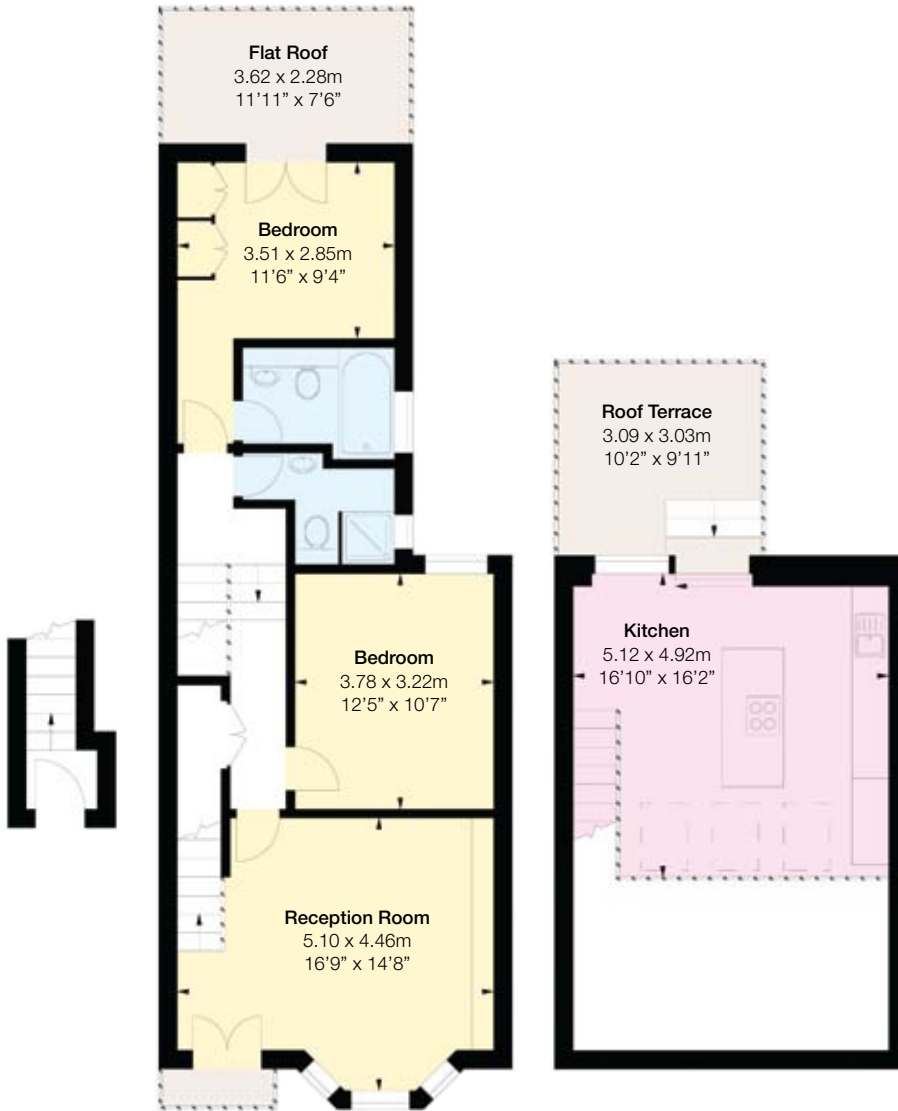
A superbly executed, newly refurbished upper maisonette located on Hestercombe Avenue on the North side of Fulham Road. Exquisitely designed, constructed and finished by Baynham Couldridge, one of the country's leading luxury development teams, the property is arranged over two floors offering nearly 1,000 square feet.

The Victorian exterior has been faithfully restored, whilst inside high-end technology has been perfectly integrated within the construction to create a sublime, modern living space of the utmost simplicity and convenience.

- 2 Bedrooms
- 2 Bathrooms
- Mezzanine Kitchen
- Roof Terrace
- A Baynham Couldridge Development

 Putney Bridge (0.3 miles)
 Putney (1 mile)

Approx Gross Internal Area:
969 sq ft - 90 sq m



info@brikproperty.co.uk

Brik, Fulham Studios,
Wyfold Road, London, SW6 6SE

Under the Property Misdescriptions Act these particulars are intended as a guide and act as information only. They do not constitute an offer or part of a contract but give a fair description for the guidance of potential purchasers. All details and approximate measurements are given in good faith and believed to be correct at time of printing. Potential purchasers should not rely on them as statements or representations of fact but must satisfy themselves as to their correctness by inspection or otherwise.

Ground Floor/
Entrance

First Floor

Mezzanine

