



Hestercombe Avenue, SW6

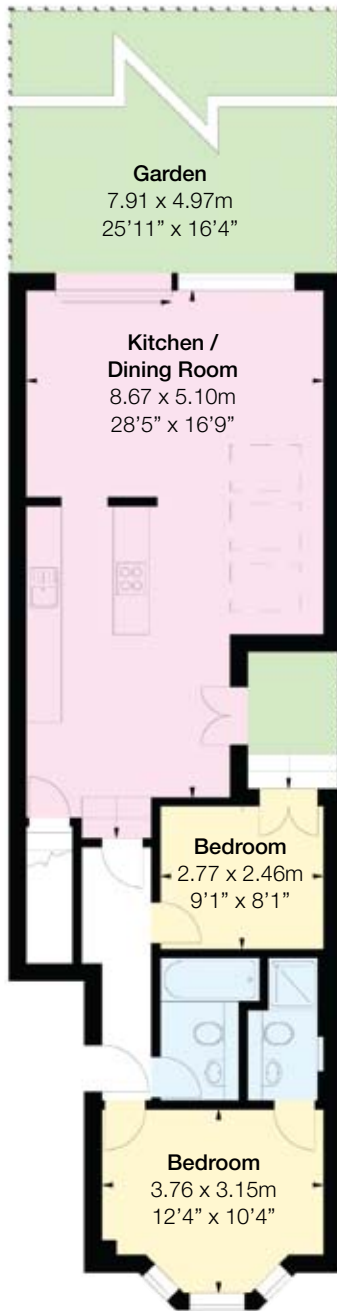
A superbly executed, newly refurbished ground floor garden flat located on Hestercombe Avenue on the North side of Fulham Road. Exquisitely designed, constructed and finished by Baynham Couldridge, one of the country's leading luxury development teams, the property is arranged over a split level ground floor offering nearly 900 square feet, and benefits from a stunning South facing landscaped city garden.

The Victorian exterior has been faithfully restored, whilst inside high-end technology has been perfectly integrated within the construction to create a sublime, modern living space of the utmost simplicity and convenience.

- 2 Bedrooms
- 2 Bathrooms
- South Facing Garden
- Open Plan Kitchen
- A Baynham Couldridge Development
- Available Now

- 🚶 Putney Bridge (0.3 miles)
- 🚶 Putney (1 mile)

Approx Gross Internal Area:
893 sq ft - 83 sq m



Cellar

Ground Floor



info@brikproperty.co.uk

Brik, Fulham Studios,
Wyfold Road, London, SW6 6SE

Under the Property Misdescriptions Act these particulars are intended as a guide and act as information only. They do not constitute an offer or part of a contract but give a fair description for the guidance of potential purchasers. All details and approximate measurements are given in good faith and believed to be correct at time of printing. Potential purchasers should not rely on them as statements or representations of fact but must satisfy themselves as to their correctness by inspection or otherwise.

